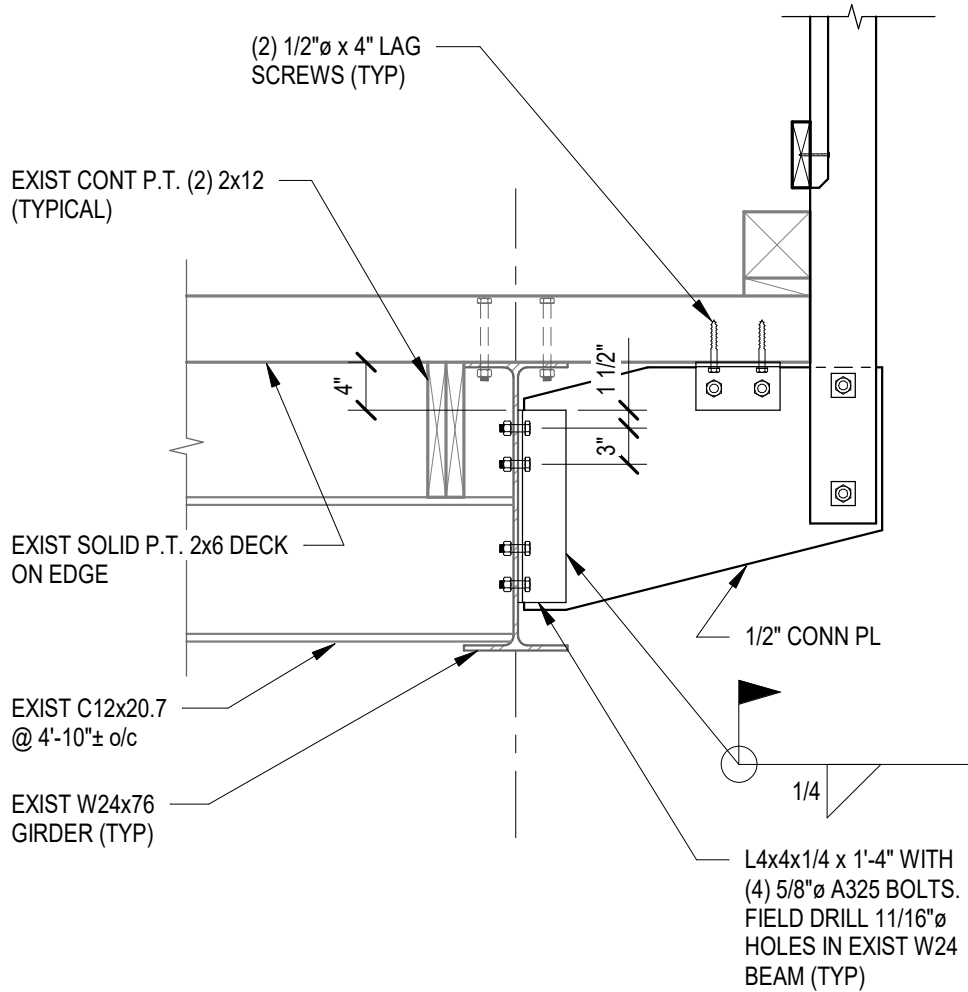



NOTE: SEE SECT 2/S1 FOR  
ADDITIONAL DETAILS NOT  
SHOWN OR NOTED



① POST & RAILING CONNECTION DETAIL  
3/4" = 1'-0"

POST & RAILING CONNECTION DETAIL	 208 Flynn Avenue, Suite 2A, Burlington, VT tel. 802-863-6225 85 Mechanic Street, Suite E2-3, Lebanon, NH tel. 603-442-9333 www.engineeringventures.com	Checked By: BN	Scale: 3/4" = 1'-0"
MILSS RIVERSIDE PARK COVERED BRIDGE		Drawn By: JTM	EV Project No.: 20464
		Date: 06/24/21	<b>SKS-01</b>