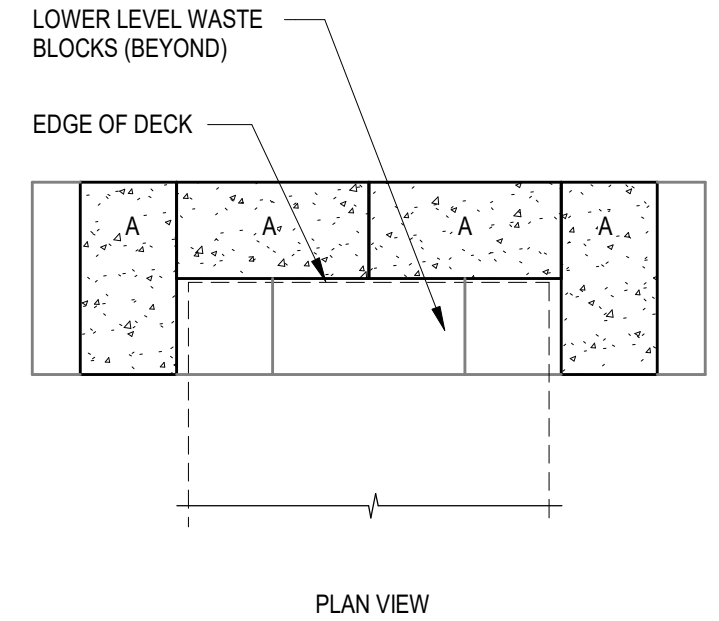
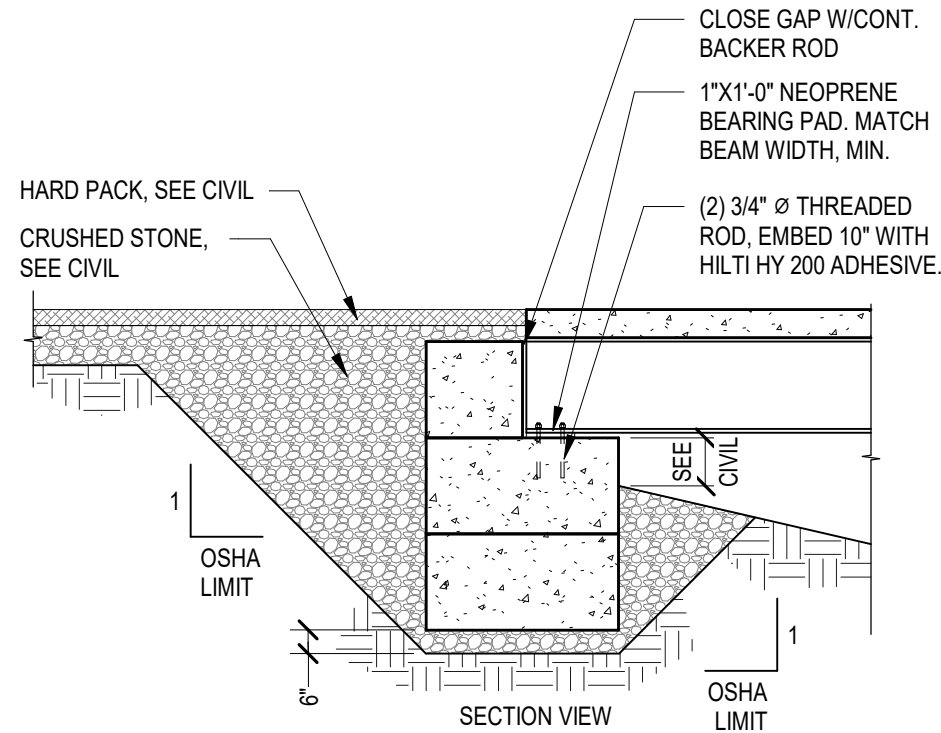
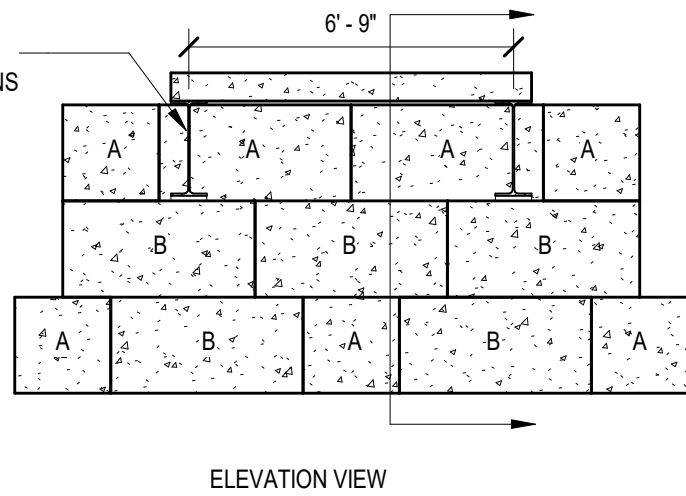


CONCRETE WASTE BLOCK,  
SEE TABLE FOR DIMENSIONS

	HEIGHT	WIDTH	LENGTH
A	2'-0"	2'-0"	4'-0"
B	2'-0"	4'-0"	4'-0"



1 TEMPORARY BRIDGE FOOTING  
1/4" = 1'-0"